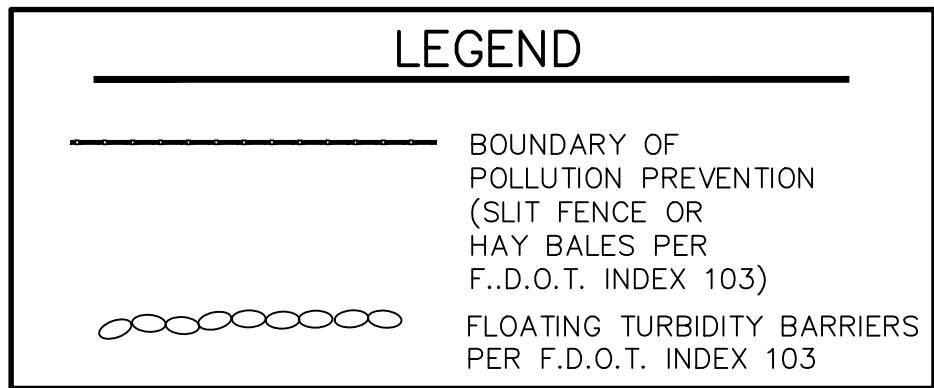


1. CITY - CITY OF POMPANO BEACH
2. CONTRACTOR - UTILITY CONTRACTOR AND ALL UTILITY SUBCONTRACTORS
3. ENGINEER - ENGINEER RESPONSIBLE FOR INSPECTION AND CERTIFICATION

1. A PRE-CONSTRUCTION MEETING IS TO BE HELD PRIOR TO DELIVERY OF MATERIALS AND INITIATION OF ANY WATER AND SEWER CONSTRUCTION. THE MEETING SHALL BE ATTENDED BY THE CITY, CONTRACTOR, SUBCONTRACTORS, ENGINEER AND OTHER INTERESTED PARTIES.
2. ANY REVISIONS TO THE APPROVED PLANS MUST BE APPROVED BY THE CITY PRIOR TO THE PRE-CONSTRUCTION MEETING.
3. A MINIMUM OF THREE (3) COPIES OF THE CURRENT APPROVED PRODUCT LIST AND ALL NECESSARY SHOP DRAWINGS SHALL BE SUBMITTED FOR APPROVAL PRIOR TO SCHEDULING THE PRE-CONSTRUCTION MEETING. ALL PIPE MANUFACTURERS SHALL SUBMIT THREE (3) COPIES OF AN AFFIDAVIT THAT THE PIPE AND COATINGS WERE MANUFACTURED IN ACCORDANCE WITH AWWA C151/A21.51-91.
4. ALL APPLICABLE PERMITS MUST BE OBTAINED WITH COPIES PROVIDED TO THE CITY PRIOR TO COMMENCEMENT OF CONSTRUCTION.
5. THE CONTRACTOR SHALL MAINTAIN A CURRENT APPROVED SET OF CONSTRUCTION DOCUMENTS ON SITE AT ALL TIMES.
6. ALL MATERIALS SUPPLIED SHALL CONFORM TO PRODUCT LIST AND SHOP DRAWINGS AS APPROVED BY THE CITY PRIOR TO CONSTRUCTION. ALL REQUESTS FOR MATERIAL SUBSTITUTION SHALL BE APPROVED PRIOR TO DELIVERY OF THESE MATERIALS TO THE JOB SITE.

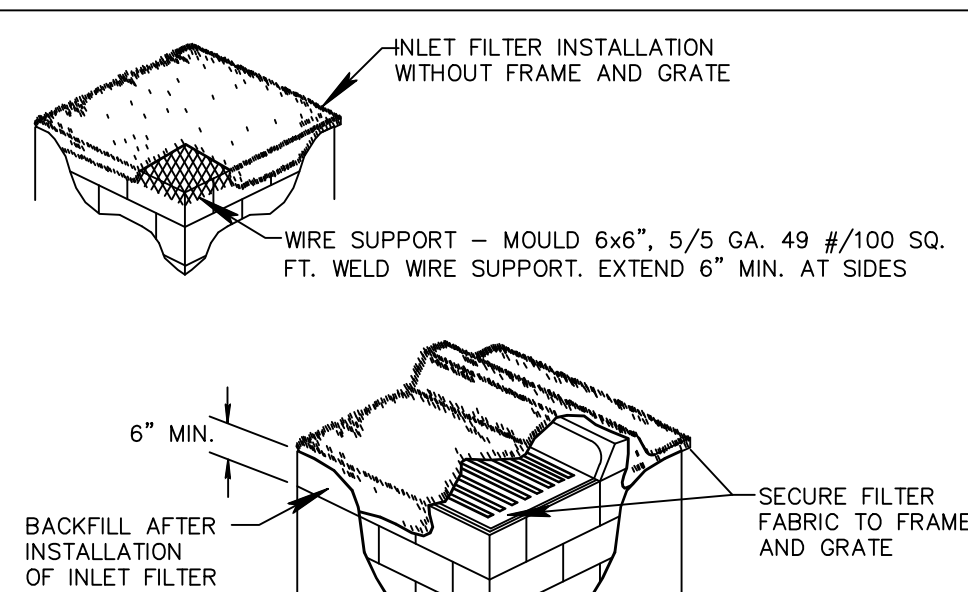
7. THE LOCATION OF THE EXISTING UTILITIES AS SHOWN ON THE PLANS ARE APPROXIMATE ONLY. THE EXACT LOCATIONS SHALL BE DETERMINED BY THE CONTRACTOR PRIOR TO CONSTRUCTION. IN ADDITION, THE CONTRACTOR SHALL BE RESPONSIBLE TO VERIFY OTHER UTILITIES (NOT SHOWN ON THE PLAN) EXIST WITHIN THE AREA OF CONSTRUCTION. SHOULD THERE BE ANY UTILITY CONFLICTS, THE CONTRACTOR SHALL INFORM THE CITY AND NOTIFY THE RESPECTIVE UTILITY OWNER TO RESOLVE THE UTILITY CONFLICTS AND THE UTILITY ADJUSTMENTS AS REQUIRED.
8. THE CONTRACTOR SHALL BE RESPONSIBLE AT ALL TIMES THROUGHOUT THE DURATION OF CONSTRUCTION FOR THE PROTECTION OF EXISTING AND NEWLY INSTALLED UTILITIES FROM DAMAGE OR DISRUPTION OF SERVICE. THE CONTRACTOR SHALL BE RESPONSIBLE FOR TAKING SUCH MEASURES AS NECESSARY TO PROTECT THE HEALTH, SAFETY, AND WELFARE OF THOSE PERSONS HAVING ACCESS TO THE WORK SITE.
9. THE CONTRACTOR SHALL BE RESPONSIBLE FOR OBTAINING LOCATIONS OF ALL OTHER UTILITY FACILITIES.
10. THE CONTRACTOR SHALL SCHEDULE INSPECTIONS AND TESTS WITH THE CITY A MINIMUM OF 24 HOURS IN ADVANCE.
11. CONTRACTOR SHALL NOT DISTURB EXISTING CITY MAINS OR STRUCTURES WITHOUT THE PRESENCE OF A CITY INSPECTOR. CITY UTILITY SYSTEM VALVES AND APPURTENANCES MAY ONLY BE OPERATED BY CITY PERSONNEL.
12. FACILITIES PROPOSED HEREIN SHALL BE CONSTRUCTED IN ACCORDANCE WITH THE APPROVED PLANS. DEVIATIONS FROM THE APPROVED PLANS MUST BE APPROVED IN ADVANCE BY THE CITY.
13. UPON COMPLETION OF CONSTRUCTION AND PRIOR TO FINAL ACCEPTANCE OF THE WORK, A FINAL INSPECTION SHALL VERIFY PROPER ADHERENCE TO ALL FACETS OF THE PLANS AND SPECIFICATIONS.
14. PAVING, DRAINAGE AND TRAFFIC CONSTRUCTION SHALL CONFORM TO FLORIDA DEPARTMENT OF TRANSPORTATION ROADWAY AND DESIGN STANDARDS, STANDARD SPECIFICATIONS FOR ROAD AND BRIDGE CONSTRUCTION, MANUAL ON UNIFORM TRAFFIC CONTROL DEVICES (MUTCD) AND BROWARD COUNTY TRIGLICS UNLESS SHOWN OTHERWISE.
15. AS-BUILT DRAWINGS SHALL BE PREPARED BY A REGISTERED LAND SURVEYOR, REGISTERED IN THE STATE OF FLORIDA, AND SUBMITTED BY THE CONTRACTOR TO THE CITY.
16. PRIOR TO COMMENCEMENT OF ANY EXCAVATION, THE CONTRACTOR SHALL COMPLY WITH FLORIDA STATUTE 553-851 FOR PROTECTION OF UNDERGROUND GAS PIPE LINES.
17. CONTRACTOR SHALL NOTIFY SUNSHINE STATE ONE (1-800-432-4770) 48 HOURS IN ADVANCE OF CONSTRUCTION.
18. GRADES SHOWN ON PLANS ARE FINISHED GRADES. THE CONTRACTOR SHALL BE REQUIRED TO ADJUST EXISTING SANITARY SEWER MANHOLE TOPS AND VALVE BOX COVERS TO FINISHED GRADE.
19. CONTRACTOR SHALL MAINTAIN LOCAL TRAFFIC AT ALL TIMES DURING CONSTRUCTION AND SHALL BE REQUIRED TO PROVIDE CONE BARRIAGES, LIGHTING, SIGNAGE AND FLAMEN AS NECESSARY TO PROVIDE FOR THE SAFETY OF THE PUBLIC IN THE WORK AREA. THE CONTRACTOR SHALL SUBMIT A DETAILED TRAFFIC MAINTENANCE PLAN PRIOR TO CONSTRUCTION.
20. EXISTING BASE MATERIAL THAT IS REMOVED DURING CONSTRUCTION SHALL NOT BE USED IN THE CONSTRUCTION OF NEW LIMBEROCK BASE.
21. ALL VEGETATION, DEBRIS, CONCRETE OR OTHER UNSUITABLE MATERIAL SHALL BE LEGALLY DISPOSED OF OFF-SITE IN AN AREA AT THE CONTRACTORS EXPENSE.
22. CONTRACTOR SHALL UTILIZE CONSTRUCTION METHODS AND DEVICES, SUCH AS TURBIDITY SCREENS, CURTAINS AND SLOTTING GILT BARRIERS WHERE NECESSARY IN ORDER TO COMPLY WITH ALL STATE AND LOCAL WATER QUALITY STANDARDS.
2025. ALL REINFORCED CONCRETE STORM SEWER PIPE SHALL BE CLASS III, UNLESS OTHERWISE NOTED.
23. ALL PAVED SURFACES SHALL BE PROPERLY MARKED PRIOR TO HOURS OF DARKNESS. PERMANENT PAVEMENT MARKING STALLS SHALL BE LAID OUT USING MARKING CHALK. LAYOUT TO BE REVIEWED BY THE CITY PRIOR TO PLACEMENT OF FINAL MARKING.
24. EMBANKMENT (FILL) AND EXCESS MATERIAL REQUIRED FOR ROADWAY RECONSTRUCTION AND UTILITY INSTALLATIONS SHALL BE SUPPLIED AND/OR DISPOSED OF BY THE CONTRACTOR. ALL COSTS ASSOCIATED WITH EARTHWORK REQUIRED TO COMPLETE THE ROADWAY RECONSTRUCTION AND UTILITY IMPROVEMENTS SHALL BE INCLUDED IN THE COSTS OF OTHER APPROPRIATE PAY ITEMS.
25. CONTINUITY OF WATER AND SEWER SERVICE TO CITY UTILITY CUSTOMERS SHALL BE MAINTAINED THROUGHOUT THE DURATION OF THIS PROJECT. IF A BREAK IN SERVICE IS UNAVOIDABLE TO ACCOMMODATE CONNECTION OF NEW FACILITIES, IT SHALL BE SCHEDULED FOR OFF PEAK HOURS WITH THE CITY. DETERMINATION OF SERVICE BREAK REQUIREMENT WILL BE MADE BY THE CITY.
27. SITE INFORMATION BASED ON A SURVEY PREPARED BY: **CAULFIELD & WHEELER, INC.**
28. RELOCATION OF UTILITY POLES AND GAS PIPE LINES SHALL BE COORDINATED BY THE CONTRACTOR WITH FLORIDA POWER AND LIGHT, AND FLORIDA PUBLIC UTILITIES. RESPECTIVELY, EACH UTILITY HAS BEEN NOTIFIED THAT THEY WILL BE REQUIRED TO RELOCATE THEIR UTILITIES.



NOTE: IN ALL CASES, SIDEWALKS ARE REQUIRED IN FRONT OF ALL COMMON AREAS TO PROVIDE CONTINUITY.

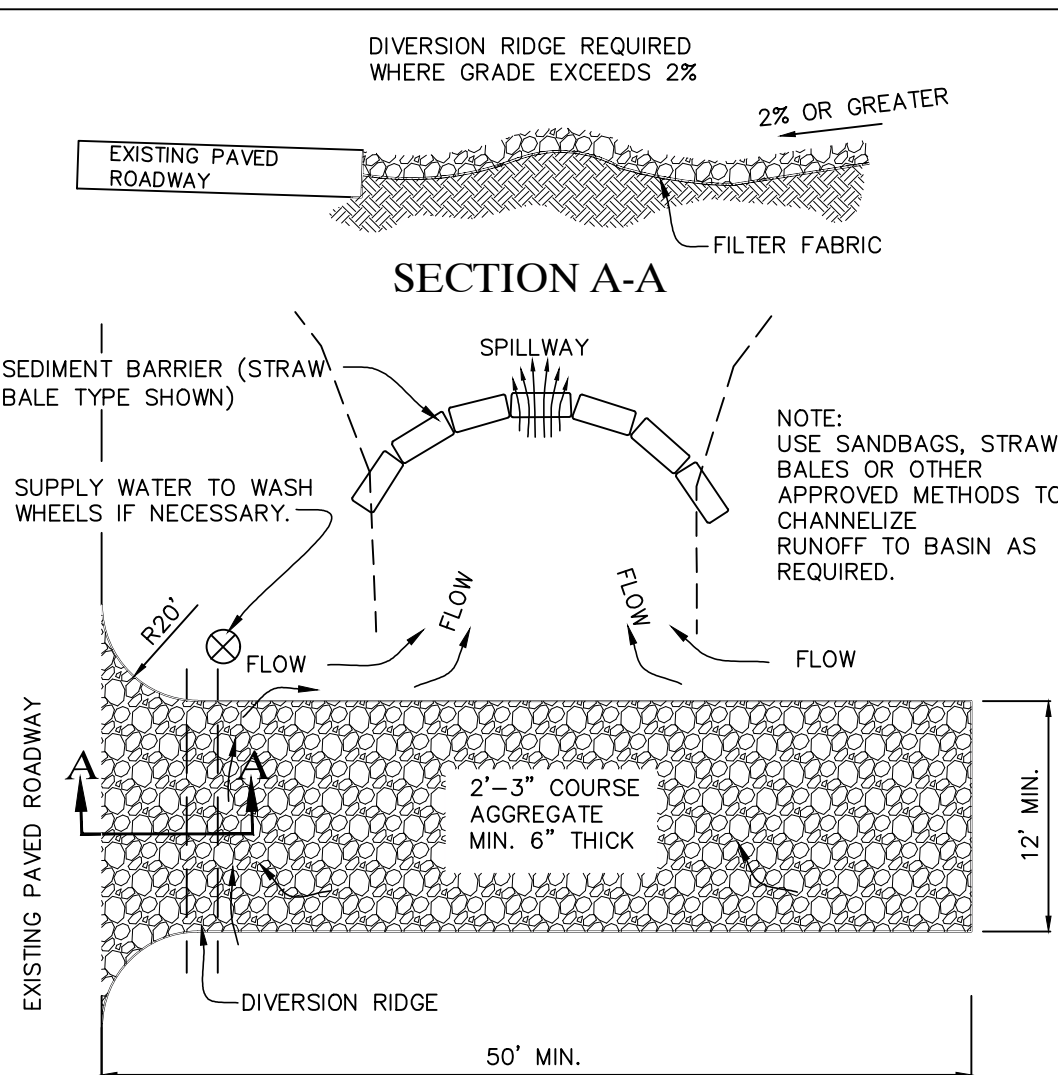
THE CITY ENGINEER'S APPROVAL
MUST BE OBTAINED PRIOR TO ANY
CONSTRUCTION OR INSTALLATION OF
BERMS, PLANTINGS, TREES,
LANDSCAPING, STREET LIGHTING, OR
ANY OTHER ABOVE-GROUND
STRUCTURES WITHIN THE DEDICATED
RIGHT(S) OF WAY OR RECORDED
DRAINAGE EASEMENTS.

NOTE:
ALL ELEVATIONS ARE IN "NORTH AMERICAN
VERTICAL DATUM 1988 (NAVD 88)



NOTES: NOT TO SCALE

1. CONTRACTOR IS TO CLEAN INLET FILTER AFTER EVERY STORM.
2. CONTRACTOR TO REMOVE FABRIC JUST PRIOR TO PAVING.
3. A SEDIMENT TRAP WILL BE EXCAVATED BEHIND THE CURB AT THE INLET. THE BASIN SHALL BE AT LEAST 12 TO 14 INCHES IN DEPTH, APPROXIMATELY 36 INCHES IN WIDTH, AND APPROXIMATELY 7 TO 10 FEET IN LENGTH PARALLEL TO THE CURB. STORM WATER SHALL REACH THE SEDIMENT TRAP CURB CUTS ADJACENT TO EACH SIDE OF THE INLET STRUCTURE. THESE OPENINGS SHALL BE AT LEAST 12 INCHES IN LENGTH. STORM WATER MAY ALSO REACH THE BASIN VIA OVERLAND FLOW LAND AREA BEHIND THE CURB. THE CURB CUTS SHALL BE REPAIRED WHEN THE SEDIMENT TRAP IS REMOVED.

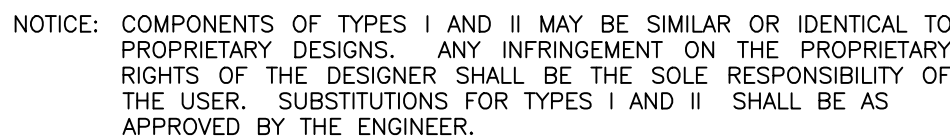


PLAN

NOTES:

1. THE ENTRANCE BE MAINTAINED IN A CONDITION THAT WILL PREVENT TRACKING OR FLOWING OF SEDIMENT ONTO PUBLIC RIGHTS-OF-WAY. THIS MAY REQUIRED TOP DRESSING, REPAIR AND/OR CLEAN OUT OF ANY MEASURES USED TO TRAP SEDIMENT.
2. WHEN NECESSARY, WHEELS SHALL BE CLEANED PRIOR TO ENTRANCE ONTO PUBLIC RIGHT-OF-WAY.
3. WHEN WASHING IS REQUIRED, IT SHALL BE DONE ON AN AREA STABILIZED WITH CRUSHED STONE THAT DRAINS INTO AN APPROVED SEDIMENT TRAP OR SEDIMENT BASIN.

PLATE 4.03a
SOURCE: EROSION DRAW



FLOATING TURBIDITY BARRIERS N.T.S.

SILT FENCE INSTALLATION DETAIL D 9.1c
(Sheet 1 of 2) N.T.S.

SILT FENCE INSTALLATION DETAIL D 9.1b
(Sheet 2 of 2) N.T.S.

INLET FILTER DETAIL
N.T.S.

OAKS @ PALM AIRE
POLLUTION PREVENTION PLAN

DATE 06/12/2023
DRAWN BY RDW
F.B./ PG. ----
SCALE AS SHOWN

RYAN D. WHEELER
PROFESSIONAL ENGINEER
LICENSE NO. 71477
STATE OF FLORIDA
- FOR THE FIRM -
DATE Oct 16, 2024

JOB #10326
SHT.NO.
PD.0
OF 07 SHEETS

[illegible]

FIELD & WHEELER, INC.
CIVIL ENGINEERING - LAND PLANNING
LANDSCAPE ARCHITECTURE - SURVEYING
7900 GLADES ROAD - SUITE 100
BOCA RATON, FLORIDA 33434
PHONE (561)-392-1991 / FAX (561)-750-1450

